

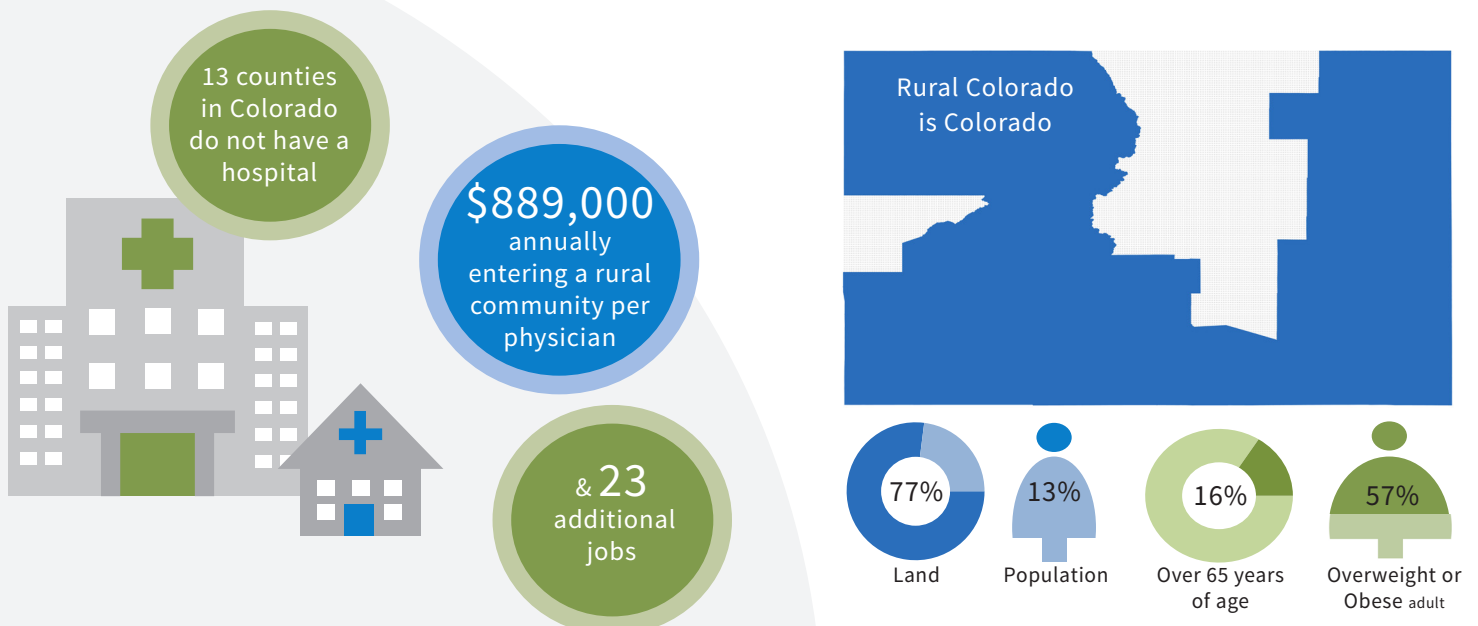
# Rural and Frontier Health Care Preceptor Tax Credit

## HB16-1142

A primary care practice serves as the patient's first point of entry into the healthcare system and as the continuing focal point for all needed healthcare services.

The literature on rural healthcare workforce states primary care providers are likely to practice and stay in rural areas if training occurs outside of urban locations. Due to various circumstances, there are an inadequate number of rural primary care providers able to precept. The number of students interested in rural practice far outweigh the number of preceptors needed for rural clinical rotations.

### ACCESS TO CARE IN RURAL COLORADO



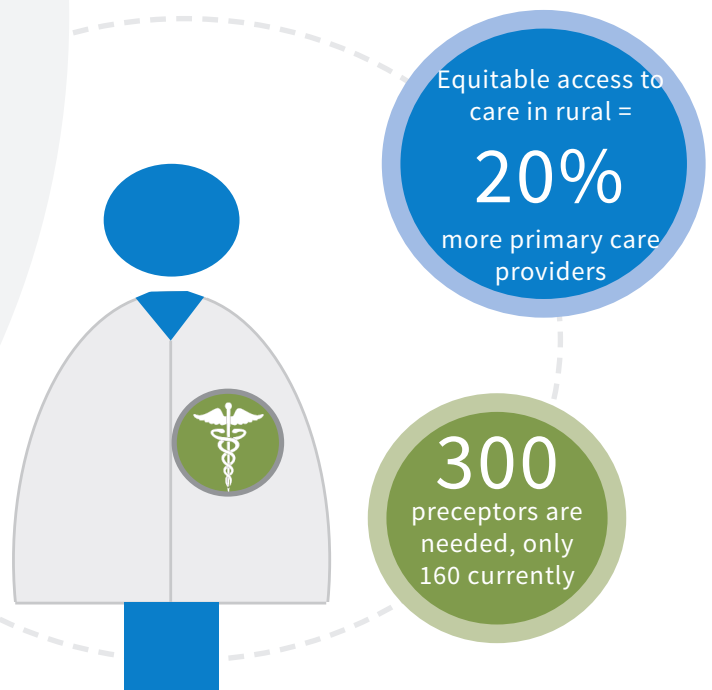
### RURAL HEALTHCARE WORKFORCE

How long does it take to **recruit** a primary care physician for rural Colorado?



On average, **1 to 3 years**.

And more than six months to recruit an advanced practice nurse or physician assistant.



# The Investment

**HB16-1142** was developed by a roundtable of rural health care experts and has gained support from all Colorado institutions of higher education that offer rural residency training, among other reputable health and consumer organizations.

## ELIGIBILITY & INCENTIVES



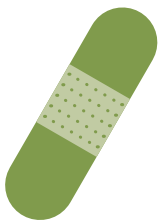
### ELIGIBLE DISCIPLINES

- physicians
- advanced practice nurses
- physician assistants
- dentists

### TAX CREDITS

\$1,000 annual tax credit for up to 300 rural primary care preceptors

## OUTCOMES



### Short Term

Increase the number of preceptors in rural Colorado.



### Long Term

Positively impact the healthcare workforce pipeline by supplying more rural primary care providers to Colorado through an increase in sustainable precepting opportunities.

Content and data are for informational purposes only. Data is provided by the Health Awareness for Rural Communities (HARC) DataBank. HARC data is compiled from publicly available state and national sources. For information on definitions, data quality and other questions contact Colorado Rural Health Center at 800.851.6782.



COLORADO ACADEMY OF  
FAMILY PHYSICIANS



Colorado Coalition for the  
Medically Underserved

For further action or information, contact:

Kelly Erb  
Policy Program Coordinator  
Colorado Rural Health Center  
720.248.2748  
ke@coruralhealth.org



COLORADO  
RURAL HEALTH  
CENTER

The State Office of Rural Health